

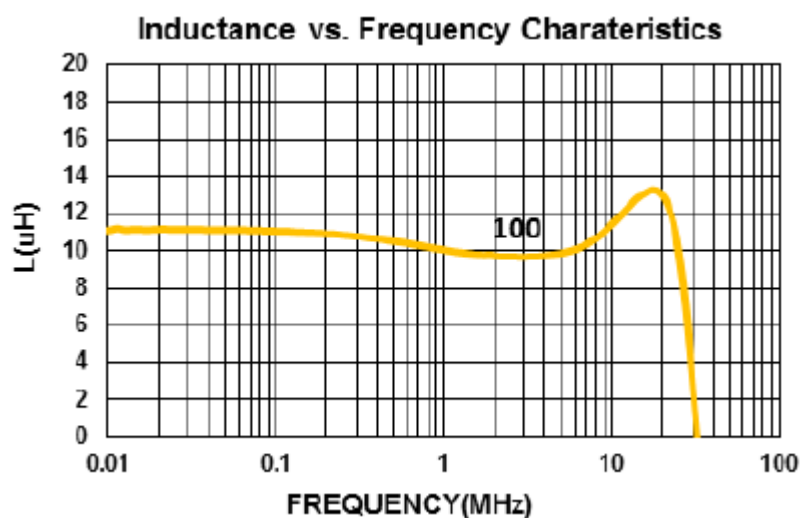
Electrical Characteristics

Part Number	Inductance (μ H)	Tolerance (\pm %)	Test Frequency (MHz)	RDC (Ω)Max.	Rated Current (mA)Max.
GMWI-201212-100□-CP	10	20, 30	1 MHz, 200 mV	0.5	400

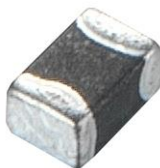
Note: When ordering, please specify tolerance code. Tolerance: M= \pm 20% , T= \pm 30%

- Operating temperature range - 40 °C ~ 105 °C(Including self - temperature rise)
- Rate Current : Applied the current to coils, the temperature rise shall not be more than 30°C
- Measure Equipment :
 L & Q : HP4291A
 SRF : Agilent HP8753D/Agilent E4991A
 RDC : HP4338B or CHEN HWA 502

Test Instruments : Agilent E4991A Impedance / Material Analyzer



GMWI Series



The SMD multi-layered ferrite chip inductors provide a cost-effective solution for densely packed PC board designs. GMWI series comes in 3 sizes and is suitable for low frequency applications.

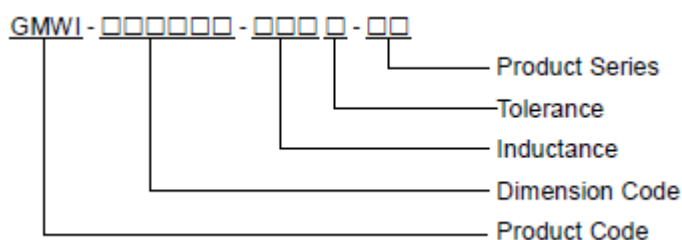
Features

- RoHS Compliant
- High mounting density of compact circuit due to crosstalk elimination that results from a closed magnetic flux in a ferrite material
- Suitable for flow and re-flow soldering
- Available in 3 sizes

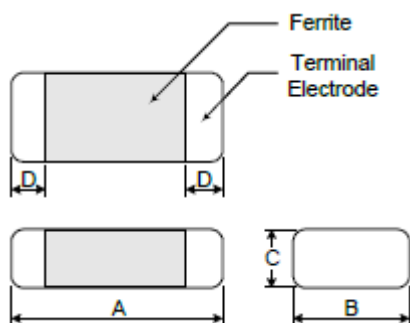
Applications

- Personal computers, HDDs, other various electronic devices
- Any portable device where compact size and high mounting densities are required

Product Identification



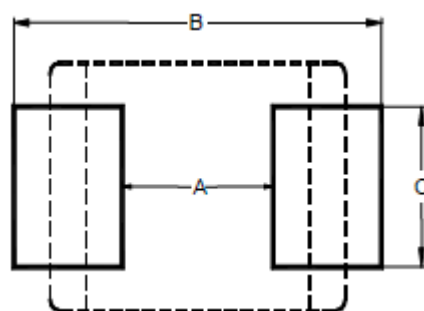
Shape and Dimensions



Dimensions in mm

TYPE	A	B	C	D
160808	1.6±0.2	0.8±0.2	0.8±0.2	0.3±0.2
201209	2.0±0.2	1.25±0.2	0.9±0.2	0.5±0.3
201212	2.0±0.2	1.25±0.2	1.25±0.2	0.5±0.3

Recommended Pattern



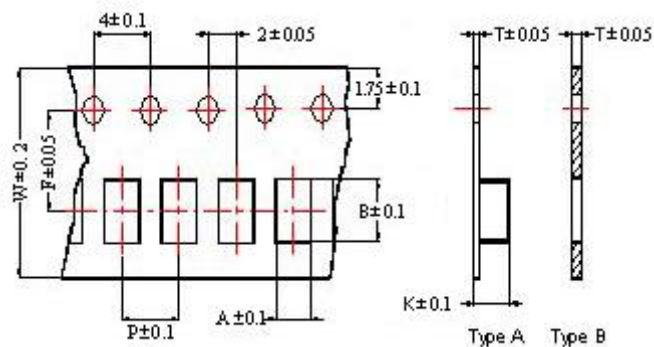
Dimensions in mm

TYPE	A	B	C
160808	0.7 ~ 0.8	1.8 ~ 2.0	0.6 ~ 0.8
201209	1.0 ~ 1.2	2.6 ~ 4.0	1.0 ~ 1.4
201212	1.0 ~ 1.2	2.6 ~ 4.0	1.0 ~ 1.4

SMD Multilayer Ferrite Chip Inductors –GMWI Series

Packaging Specifications

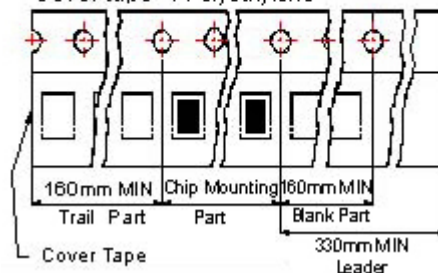
Tape Dimensions



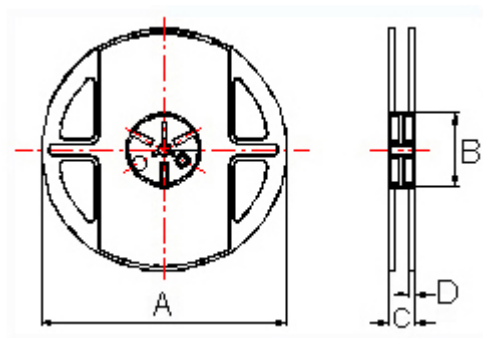
Tape Material

Tape Material

Carrier tape : Polycarbonate (Tape A)
Paper (Tape B)
Cover tape : Polyethylene



Reel Dimensions



Dimensions in mm

TYPE	Tape Dimensions								Reel Dimensions				Quantity PCS / REEL
	A	B	T	W	P	F	K	Tape	A	B	C	D	
160808	1.05	1.85	0.95	8.0	4.0	3.5	-	B	178	60	12	1.5	4000
201209	1.50	2.30	0.97	8.0	4.0	3.5	-	B	178	60	12	1.5	4000
201212	1.35	2.25	0.22	8.0	4.0	3.5	1.35	A	178	60	12	1.5	3000